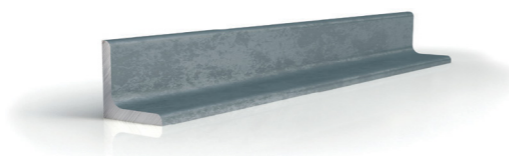


Equal Angle



Grades: 304, 316
Finish: HRAP

Unit of Supply:
6m lengths
Certification: Acc. to ASTM A276 / A484

AES

Product Code	Grade	Product Size (mm)	Description	kg/m
G304				
AES02002003G304H+0600	G304	20.0 x 20.0 x 3.0mm	EQUAL ANGLE HRAP G304 ASTM A276/A484	0.89
AES02502503G304H+0600	G304	25.0 x 25.0 x 3.0mm	EQUAL ANGLE HRAP G304 ASTM A276/A484	1.13
AES02502505G304H+0600	G304	25.0 x 25.0 x 5.0mm	EQUAL ANGLE HRAP G304 ASTM A276/A484	1.77
AES03003003G304H+0600	G304	30.0 x 30.0 x 3.0mm	EQUAL ANGLE HRAP G304 ASTM A276/A484	1.36
AES03003005G304H+0600	G304	30.0 x 30.0 x 5.0mm	EQUAL ANGLE HRAP G304 ASTM A276/A484	2.17
AES04004003G304H+0600	G304	40.0 x 40.0 x 3.0mm	EQUAL ANGLE HRAP G304 ASTM A276/A484	1.85
AES04004005G304H+0600	G304	40.0 x 40.0 x 5.0mm	EQUAL ANGLE HRAP G304 ASTM A276/A484	2.97
AES05005003G304H+0600	G304	50.0 x 50.0 x 3.0mm	EQUAL ANGLE HRAP G304 ASTM A276/A484	2.36
AES05005005G304H+0600	G304	50.0 x 50.0 x 5.0mm	EQUAL ANGLE HRAP G304 ASTM A276/A484	3.79
AES05005006G304H+0600	G304	50.0 x 50.0 x 6.0mm	EQUAL ANGLE HRAP G304 ASTM A276/A484	4.46
AES06506506G304H+0600	G304	65.0 x 65.0 x 6.0mm	EQUAL ANGLE HRAP G304 ASTM A276/A484	5.95
AES07507506G304H+0600	G304	75.0 x 75.0 x 6.0mm	EQUAL ANGLE HRAP G304 ASTM A276/A484	6.89
AES07507510G304H+0600	G304	75.0 x 75.0 x 10.0mm	EQUAL ANGLE HRAP G304 ASTM A276/A484	11.10
AES10010006G304H+0600	G304	100.0 x 100.0 x 6.0mm	EQUAL ANGLE HRAP G304 ASTM A276/A484	9.28
AES10010010G304H+0600	G304	100.0 x 100.0 x 10.0mm	EQUAL ANGLE HRAP G304 ASTM A276/A484	15.00
AES15015010G304H+0600	G304	150.0 X 150.0 X 10.0mm	EQUAL ANGLE HRAP G304 ASTM A276/A484	22.83

G316

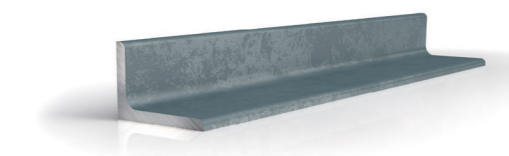
AES02502503G316H+0600	G316	25.0 x 25.0 x 3.0mm	EQUAL ANGLE HRAP G316 ASTM A276/A484	1.13
AES02502505G316H+0600	G316	25.0 x 25.0 x 5.0mm	EQUAL ANGLE HRAP G316 ASTM A276/A484	1.77
AES03003003G316H+0600	G316	30.0 x 30.0 x 3.0mm	EQUAL ANGLE HRAP G316 ASTM A276/A484	1.36
AES03003005G316H+0600	G316	30.0 x 30.0 x 5.0mm	EQUAL ANGLE HRAP G316 ASTM A276/A484	2.18
AES04004003G316H+0600	G316	40.0 x 40.0 x 3.0mm	EQUAL ANGLE HRAP G316 ASTM A276/A484	1.85
AES04004005G316H+0600	G316	40.0 x 40.0 x 5.0mm	EQUAL ANGLE HRAP G316 ASTM A276/A484	2.97
AES05005003G316H+0600	G316	50.0 x 50.0 x 3.0mm	EQUAL ANGLE HRAP G316 ASTM A276/A484	2.36
AES05005005G316H+0600	G316	50.0 x 50.0 x 5.0mm	EQUAL ANGLE HRAP G316 ASTM A276/A484	3.79
AES05005006G316H+0600	G316	50.0 x 50.0 x 6.0mm	EQUAL ANGLE HRAP G316 ASTM A276/A484	4.46
AES06506506G316H+0600	G316	65.0 x 65.0 x 6.0mm	EQUAL ANGLE HRAP G316 ASTM A276/A484	5.95
AES07507506G316H+0600	G316	75.0 x 75.0 x 6.0mm	EQUAL ANGLE HRAP G316 ASTM A276/A484	6.89
AES07507510G316H+0600	G316	75.0 x 75.0 x 10.0mm	EQUAL ANGLE HRAP G316 ASTM A276/A484	11.10
AES10010006G316H+0600	G316	100.0 x 100.0 x 6.0mm	EQUAL ANGLE HRAP G316 ASTM A276/A484	9.28
AES10010010G316H+0600	G316	100.0 x 100.0 x 10.0mm	EQUAL ANGLE HRAP G316 ASTM A276/A484	15.25
AES15015006G316LF+0600	G316	150.0 X 150.0 X 6.0mm	EQUAL ANGLE LASER FUSED G316 ASTM A1069	14.27
AES15015010G316H+0600N	G316	150.0 X 150.0 X 10.0mm	EQUAL ANGLE HRAP G316 ASTM A276/A484	22.83
AES20020007G316LF+0600	G316	200.0 X 200.0 X 7.0mm	EQUAL ANGLE LASER FUSED G316 ASTM A1069	22.00
AES20020010G316LF+0600	G316	200.0 X 200.0 X 10.0mm	EQUAL ANGLE LASER FUSED G316 ASTM A1069	31.67

Division	Tolerance Metric Size
Squareness of legs	90° ± 2°
Straightness	Not exceeding 3 mm / metre
Length	+ 50 mm, - 0 mm
Weight	≤ 9 kg/m ± 7.5%
	> 9 kg/m ± 4.5%

A full size range can be produced via Laser Fused Solutions on request

Size tolerances are in accordance with JIS G 4317.

Unequal Angle



Grades: 304, 316
Finish: HRAP

Unit of Supply:
6m lengths
Certification: Acc. to ASTM A276 / A484

AUS

Product Code	Grade	Product Size (mm)	Description	Weight ea (kg)	kg/m
AUS07505006G316H+0600	G316	75.0 x 50.0 x 6.0mm	UNEQUAL ANGLE HRAP G316 ASTM A276/A484	36.18	6.03
AUS10005006G316H+0600	G316	100.0 x 50.0 x 6.0mm	UNEQUAL ANGLE HRAP G316 ASTM A276/A484	43.80	7.30

A full size range can be produced via Laser Fused Solutions on request