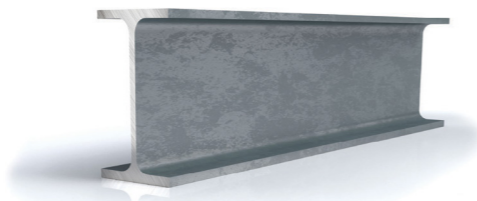
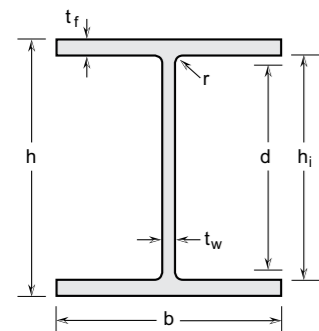


# Universal Beams & Columns

According to ASTM A276/ A479 / A484



## Available sizes - ex. mill production or overseas stockists



### Laser fused

according to ASTM A1069, dimensional tolerances and grades, according to ASTM A276, ASTM A484, ASTM A479, ASME SA479, MTC EN 10204 3.1

### Stainless steel

Standard stainless steel grades 304/L and 316/L  
Annealed and pickled, lengths of 6000 -0/+100 mm

General properties									
Designation	Dimensions						Dimensions for detailing		
G kg/m	h mm	b mm	tw mm	tf mm	r* mm	A mm <sup>2</sup> x10 <sup>2</sup>	hi mm	d mm	
100 x 50	9.1	100	50	5	7	2	11.33	86	82
100 x 100	14.7	100	100	5	7	2	18.33	86	82
	16.9	100	100	6	8	2	21.07	84	80
125 x 60	12.9	125	60	6	8	2	16.17	109	105
125 x 125	23.6	125	125	6.5	9	2	29.49	107	103
150 x 75	13.9	150	75	5	7	2	17.33	136	132
150 x 100	20.7	148	100	6	9	2	25.83	130	126
150 x 150	31.3	150	150	7	10	2	39.13	130	126
	37.3	154	151	8	12	2	46.67	130	126
175 x 90	17.9	175	90	5	8	2	22.38	159	155
175 x 125	23	175	125	5.5	8	2	28.78	159	155
175 x 175	32.4	171	174	6	9	2	40.53	153	149
	40	175	175	7.5	11	2	50.01	153	149
200 x 100	17.7	198	99	4.5	7	2	22.17	184	180
	20.9	200	100	5.5	8	2	26.15	184	180
200 x 150	30.1	194	150	6	9	2	37.59	176	172
	36.5	198	151	7	11	2	45.57	176	172
200 x 200	41	196	199	6.5	10	2	51.27	176	172
	49.7	200	200	8	12	2	62.11	176	172
	57.7	204	201	9	14	2	72.15	176	172
	65.8	208	202	10	16	2	82.27	176	172
250 x 125	25.2	248	124	5	8	2	31.47	232	228
	29.2	250	125	6	9	2	36.45	232	228
250 x 175	43.3	244	175	7	11	2	54.07	222	218
	50.8	248	176	8	13	2	63.55	222	218
	58.5	252	177	9	15	2	73.11	222	218
250 x 250	66	248	249	8	13	2	82.53	222	218
	72	250	250	9	14	2	90.01	222	218
	98.3	260	253	12	19	2	122.81	222	218

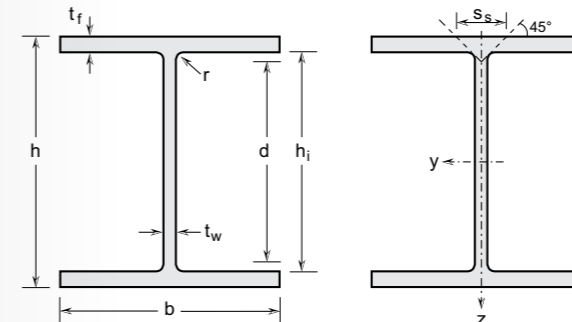
\* Profiles are laser fused with full penetration, equivalent to hot rolled (r = laser seam)

# Universal Beams & Columns

According to ASTM A276/ A479 / A484



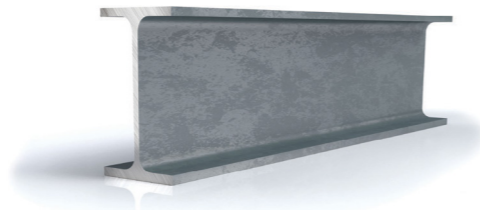
## Available sizes - ex. mill production or overseas stockists



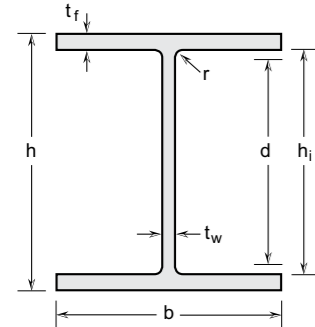
Structural properties												
Designation	Strong axis y-y					Weak axis z-z				S <sub>s</sub> mm	I <sub>t</sub> mm <sup>4</sup> x10 <sup>4</sup>	I <sub>w</sub> mm <sup>6</sup> x10 <sup>9</sup>
	I <sub>y</sub> mm <sup>4</sup> x10 <sup>4</sup>	W <sub>el,y</sub> mm <sup>3</sup> x10 <sup>3</sup>	W <sub>pl,y</sub> mm <sup>3</sup> x10 <sup>3</sup>	i <sub>y</sub> mm x10	A <sub>vz</sub> mm <sup>2</sup> x10 <sup>2</sup>	I <sub>z</sub> mm <sup>4</sup> x10 <sup>4</sup>	W <sub>el,z</sub> mm <sup>3</sup> x10 <sup>3</sup>	W <sub>pl,z</sub> mm <sup>3</sup> x10 <sup>3</sup>	iz mm x10			
100 x 50	178.77	35.75	41.94	3.97	4.96	14.68	5.87	9.3	1.14	21.34	1.55	0.32
100 x 100	330.41	66.08	74.49	4.25	4.96	116.76	23.35	35.55	2.52	21.34	2.7	2.52
	369.64	73.93	84.33	4.19	5.87	133.49	26.7	40.77	2.52	24.34	4.11	2.82
125 x 60	394.8	63.17	74.17	4.94	7.37	29	9.67	15.39	1.34	24.34	2.92	0.99
125 x 125	825.74	132.12	149.29	5.29	7.93	293.22	46.91	71.46	3.15	26.84	7.15	9.86
150 x 75	643.59	85.81	98.43	6.09	7.46	49.36	13.16	20.55	1.69	21.34	2.33	2.52
150 x 100	981.94	132.69	150.67	6.17	8.73	150.24	30.05	46.18	2.41	26.34	5.84	7.25
150 x 150	1602.09	213.61	239.8	6.4	10.23	562.88	75.05	114.11	3.79	29.34	11.57	27.56
	1979.11	257.03	291.33	6.51	11.87	689.15	91.28	138.9	3.84	34.34	19.63	34.71
175 x 90	1174.41	134.22	152.11	7.24	8.7	97.37	21.64	33.4	2.09	23.34	3.75	6.78
175 x 125	1581.9	180.79	202.03	7.41	9.54	260.64	41.7	63.71	3.01	23.84	5.2	18.16
175 x 175	2238.09	261.76	289.07	7.43	10.11	790.48	90.86	137.63	4.42	26.34	9.6	51.85
	2818.46	322.11	359.85	7.51	12.77	983.1	112.35	170.6	4.43	31.84	17.74	66.07
200 x 100	1501.12	151.63	170.77	8.23	8.91	113.34	22.9	35.24	2.26	20.84	2.85	10.32
	1763.81	176.38	200.47	8.21	10.91	133.59	26.72	41.4	2.26	23.84	4.48	12.29
200 x 150	2587.23	266.72	296.51	8.3	11.49	506.57	67.54	102.85	3.67	26.34	8.6	43.32
	3228.18	326.08	365.12	8.42	13.56	631.72	83.67	127.58	3.72	31.34	15.39	55.18
	3743.56	382	420.78	8.54	12.52	1313.84	132.04	199.88	5.06	28.84	14.9	113.6
	4613.12	461.31	513.45	8.62	15.55	1600.76	160.08	242.83	5.08	34.34	26.06	141.38
200 x 200	5499.98	539.21	604.66	8.73	17.69	1895.88	188.65	286.39	5.13	39.34	40.9	171.01
	6427.96	618.07	698.28	8.84	19.87	2199.45	217.77	330.85	5.17	44.34	60.55	202.57
250 x 125	3382.9	272.81	305.76	10.37	12.35	254.46	41.04	62.96	2.84	23.34	5.21	36.61
	3897.52	311.8	352.26	10.34	14.85	293.39	46.94	72.41	2.84	26.34	7.79	42.54
	5871.62	481.28	535.15	10.42	16.78	983.19	112.36	171.17	4.26	31.34	18.05	133.35
250 x 175	7057.79	569.18	636.63	10.54	19.35	1182.17	134.34	204.91	4.31	36.34	29.4	163.08
	8291.17	658.03	740.5	10.65	21.96	1387.67	156.8	239.48	4.36	41.34	44.77	194.67
	9680.88	780.72	859.64	10.83	19.35	3345.91	268.75	406.57	6.37	36.34	40.09	461.81
250 x 250	10583.01	846.64	937.27	10.84	21.83	3647.19	291.78	442.01	6.37	39.34	50.98	507.65
	15086.99	1160.54	1306.72	11.08	29.71	5131.4	405.64	616.1	6.46	52.34	127.43	744.63

# Universal Beams & Columns

According to ASTM A276/ A479 / A484



## Available sizes - ex. mill production or overseas stockists



### Laser fused

according to ASTM A1069, dimensional tolerances and grades, according to ASTM A276, ASTM A484, ASTM A479, ASME SA479, MTC EN 10204 3.1

### Stainless steel

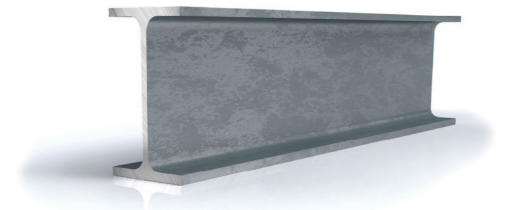
Standard stainless steel grades 304/L and 316/L  
Annealed and pickled, lengths of 6000 -0/+100 mm

General properties									
Designation	Dimensions						Dimensions for detailing		
G kg/m	h mm	b mm	tw mm	tf mm	r* mm	A mm <sup>2</sup> x10 <sup>2</sup>	hi mm	d mm	
300 x 150	24.4	294	148	4.5	6	2	30.48	282	278
	31.5	298	149	5.5	8	2	39.38	282	278
	36.3	300	150	6.5	9	2	45.36	282	278
	41.1	304	150	6.5	11	2	51.36	282	278
	45.9	306	151	7.5	12	2	57.42	282	278
	69.2	318	154	11	18	2	86.49	282	278
300 x 200	47	290	199	7	10	2	58.73	270	266
	55.7	294	200	8	12	2	69.63	270	266
	64.5	298	201	9	14	2	80.61	270	266
	76.6	304	202	10	17	2	95.71	270	266
300 x 300	86.4	298	299	9	14	2	108.05	270	266
	93.6	300	300	10	15	2	117.03	270	266
	105.7	304	301	11	17	2	132.07	270	266
	125.1	310	303	13	20	2	156.33	270	266
	130	310	305	15	20	2	162.53	270	266
	147.4	312	310	20	21	2	184.23	270	266
350 x 175	40.8	346	174	6	9	2	51.03	328	324
	49.2	350	175	7	11	2	61.49	328	324
	57.6	354	176	8	13	2	72.03	328	324
	66.1	358	177	9	15	2	82.65	328	324
	71.8	360	178	10	16	2	89.79	328	324
	79.9	364	177	11	18	2	99.83	328	324
350 x 350	114.1	344	348	10	16	2	142.59	312	308
	136.4	350	350	12	19	2	170.47	312	308
400 x 200	56	396	199	7	11	2	69.99	374	370
	65.6	400	200	8	13	2	81.95	374	370
	75.2	404	201	9	15	2	93.99	374	370
	88.1	410	202	10	18	2	110.15	374	370

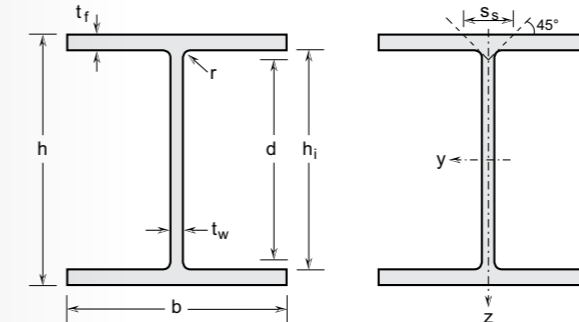
\* Profiles are laser fused with full penetration, equivalent to hot rolled (r = laser seam)

# Universal Beams & Columns

According to ASTM A276/ A479 / A484



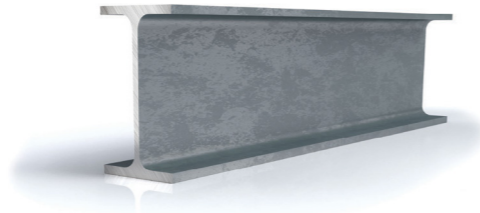
## Available sizes - ex. mill production or overseas stockists



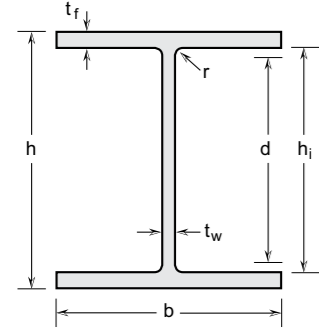
Structural properties												
Designation	Strong axis y-y					Weak axis z-z				S <sub>s</sub> mm	I <sub>t</sub> mm <sup>4</sup> x10 <sup>4</sup>	I <sub>w</sub> mm <sup>6</sup> x10 <sup>9</sup>
	I <sub>y</sub> mm <sup>4</sup> x10 <sup>4</sup>	W <sub>el,y</sub> mm <sup>3</sup> x10 <sup>3</sup>	W <sub>pl,y</sub> mm <sup>3</sup> x10 <sup>3</sup>	i <sub>y</sub> mm x10	A <sub>vz</sub> mm <sup>2</sup> x10 <sup>2</sup>	I <sub>z</sub> mm <sup>4</sup> x10 <sup>4</sup>	W <sub>el,z</sub> mm <sup>3</sup> x10 <sup>3</sup>	W <sub>pl,z</sub> mm <sup>3</sup> x10 <sup>3</sup>	iz mm x10			
300 x 150	4531.00	308.23	345.69	12.19	13.23	324.40	43.84	67.15	3.26	18.84	3.03	67.22
	6048.26	405.92	455.51	12.39	16.30	441.45	59.26	90.95	3.35	23.84	6.70	92.73
	6939.30	462.62	522.56	12.37	19.31	506.90	67.59	104.24	3.34	26.84	9.97	107.17
	8307.38	546.54	613.16	12.72	19.52	619.40	82.59	126.74	3.47	30.84	15.80	132.80
	9243.84	604.17	682.32	12.69	22.56	689.59	91.34	140.79	3.47	33.84	21.28	148.80
	14551.45	915.19	1050.77	12.97	33.75	1098.82	142.70	221.99	3.56	49.34	71.38	246.53
300 x 200	8958.51	617.83	685.24	12.35	20.03	1314.21	132.08	201.33	4.73	29.34	16.44	257.43
	10867.06	739.26	823.06	12.49	23.07	1601.16	160.12	244.34	4.8	34.34	27.67	318.10
	12839.93	861.74	963.66	12.62	26.15	1896.46	188.70	288.29	4.85	39.34	43.18	382.07
	15805.77	1039.85	1168.27	12.85	29.41	2337.61	231.45	353.60	4.94	46.34	74.23	480.90
300 x 300	18377.42	1233.38	1353.31	13.04	26.15	6238.86	417.31	631.29	7.6	39.34	61.11	1257.67
	19938.97	1329.26	1465.21	13.05	29.13	6752.26	450.15	681.77	7.6	42.34	76.39	1370.67
	22909.25	1507.19	1669.52	13.17	32.28	7729.76	513.61	778.30	7.65	47.34	110.10	1591.11
	27661.24	1784.60	1994.79	13.30	38.53	9277.67	612.39	929.52	7.7	55.34	180.30	1949.59
	28157.76	1816.63	2042.84	13.16	44.33	9465.16	620.67	945.46	7.63	57.34	193.73	1988.45
	30898.23	1980.66	2259.37	12.95	59.07	10444.89	673.86	1036.09	7.53	64.34	270.32	2207.39
350 x 175	10668.13	616.65	689.68	14.46	20.61	790.80	90.90	139.21	3.94	26.34	10.86	224.36
	13132.65	750.44	841.41	14.61	24.20	983.49	112.40	172.47	4	31.34	19.26	282.29
	15670.68	885.35	995.94	14.75	27.83	1182.62	134.39	206.61	4.05	36.34	31.21	343.38
	18283.61	1021.43	1153.29	14.87	31.50	1388.31	156.87	241.63	4.1	41.34	47.34	407.74
	19813.01	1100.72	1249.23	14.85	35.07	1506.68	169.29	261.69	4.1	44.34	59.07	444.92
	22331.84	1227.02	1398.77	14.96	38.81	1667.22	188.39	291.90	4.09	49.34	82.37	497.89
350 x 350	32514.40	1890.37	2070.20	15.10	33.47	11241.06	646.04	976.65	8.88	44.34	104.96	3022.69
	39514.49	2257.97	2493.72	15.22	40.51	13581.59	776.09	1175.00	8.93	52.34	176.96	3718.8
400 x 200	19291.22	974.30	1088.19	16.60	27.42	1445.85	145.31	222.40	4.54	31.34	21.92	535.38
	22976.82	1148.84	1286.59	16.74	31.51	1734.94	173.49	266.00	4.6	36.34	35.51	649.00
	26758.42	1324.67	1488.20	16.87	35.64	2032.43	202.23	310.60	4.65	41.34	53.86	768.01
	32327.17	1576.94	1775.64	17.13	39.95	2475.85	245.13	376.60	4.74	48.34	89.5	949.92

# Universal Beams & Columns

According to ASTM A276 / A479 / A484



Available sizes - ex. mill production or overseas stockists



**Laser fused**

according to ASTM A1069, dimensional tolerances and grades, according to ASTM A276, ASTM A484, ASTM A479, ASME SA479, MTC EN 10204 3.1

**Stainless steel**

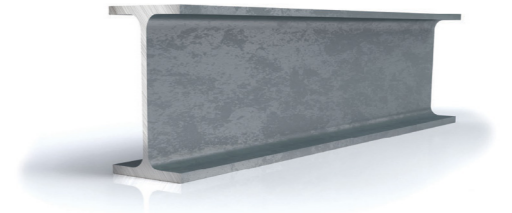
Standard stainless steel grades 304/L and 316/L  
Annealed and pickled, lengths of 6000 -0/+100 mm

General properties									
Designation	Dimensions						Dimensions for detailing		
G kg/m	h mm	b mm	t <sub>w</sub> mm	t <sub>f</sub> mm	r* mm	A mm <sup>2</sup> x10 <sup>2</sup>	h <sub>i</sub> mm	d mm	
400 x 300	92.8	386	299	9	14	2	115.97	358	354
	105.5	390	300	10	16	2	131.83	358	354
	126.2	396	302	12	19	2	157.75	358	354
400 x 400	139.5	388	402	15	15	2	174.33	358	354
	146.2	394	398	11	18	2	182.69	358	354
	171.7	400	400	13	21	2	214.57	358	354
450 x 200	65.2	446	199	8	12	2	81.55	422	418
	75.2	450	200	9	14	2	94.01	422	418
	88.5	456	201	10	17	2	110.57	422	418
	98.6	460	202	11	19	2	123.21	422	418
	109.6	460	205	14	19	2	137.01	422	418
450 x 300	104.1	434	299	10	15	2	130.13	404	400
	122.0	440	300	11	18	2	152.47	404	400
	143.5	446	302	13	21	2	179.39	404	400
500 x 200	78.3	496	199	9	14	2	97.87	468	464
	88.7	500	200	10	16	3	110.88	468	462
	102.4	506	201	11	19	4	128	468	460
	116.2	512	202	12	22	5	145.25	468	458
500 x 300	112.0	482	300	11	15	6	140.03	452	440
	126.5	488	300	11	18	7	158.14	452	438
	148.9	494	302	13	21	8	186.15	452	436
600 x 200	77.8	592	197	8	13	9	97.2	566	548
	93.7	596	199	10	15	10	117.16	566	546
	105.0	600	200	11	17	11	131.3	566	544
	119.6	606	201	12	20	12	149.56	566	542
600 x 300	135.4	582	300	12	17	13	169.21	548	522
	150.0	588	300	12	20	14	187.44	548	520
	174.1	594	302	14	23	15	217.57	548	518

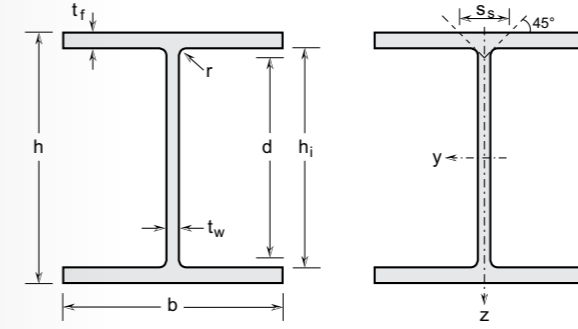
\* Profiles are laser fused with full penetration, equivalent to hot rolled (r = laser seam)

# Universal Beams & Columns

According to ASTM A276 / A479 / A484



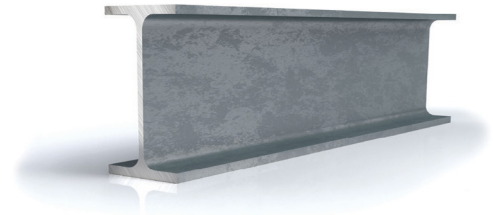
Available sizes - ex. mill production or overseas stockists



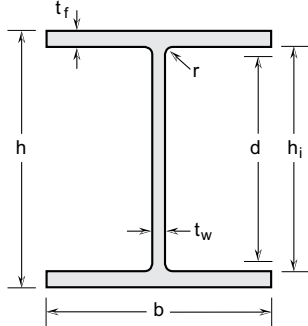
Structural properties												
Designation	Strong axis y-y					Weak axis z-z				S <sub>s</sub> mm	I <sub>t</sub> mm <sup>4</sup> x10 <sup>4</sup>	I <sub>w</sub> mm <sup>6</sup> x10 <sup>9</sup>
	I <sub>y</sub> mm <sup>4</sup> x10 <sup>4</sup>	W <sub>el,y</sub> mm <sup>3</sup> x10 <sup>3</sup>	W <sub>pl,y</sub> mm <sup>3</sup> x10 <sup>3</sup>	i <sub>y</sub> mm x10	A <sub>vz</sub> mm <sup>2</sup> x10 <sup>2</sup>	I <sub>z</sub> mm <sup>4</sup> x10 <sup>4</sup>	W <sub>el,z</sub> mm <sup>3</sup> x10 <sup>3</sup>	W <sub>pl,z</sub> mm <sup>3</sup> x10 <sup>3</sup>	i <sub>z</sub> mm x10			
400 x 300	32429.60	1680.29	1846.17	16.72	34.07	6239.39	417.35	633.07	7.33	39.34	63.25	2157.83
	37425.23	1919.24	2116.22	16.85	38.07	7202.99	480.20	728.97	7.39	44.34	93.38	2517.77
	45410.55	2293.46	2548.33	16.97	46.03	8727.31	577.97	879.35	7.44	52.34	157.66	3099.17
	47716.29	2459.60	2730.42	16.54	56.58	16251.29	808.52	1232.19	9.66	47.34	133.42	5649.06
400 x 400	54896.43	2786.62	3046.73	17.33	42.11	18917.42	950.62	1436.49	10.18	49.34	169.62	6684.77
	65372.53	3268.63	3600.75	17.45	50.14	22406.57	1120.33	1695.15	10.22	57.34	271.24	8043.90
	27520.76	1234.11	1393.28	18.37	35.23	1577.93	158.59	244.37	4.40	34.34	30.14	742.18
450 x 200	32274.17	1434.41	1622.21	18.53	39.83	1869.24	186.92	288.56	4.46	39.34	46.69	887.11
	39220.69	1720.21	1946.00	18.83	44.61	2304.36	229.29	353.98	4.57	46.34	78.97	1108.55
	44248.10	1923.83	2183.01	18.95	49.30	2614.79	258.89	400.42	4.61	51.34	109.43	1269.04
	46681.50	2029.63	2341.71	18.46	62.53	2737.79	267.10	419.94	4.47	54.34	132.76	1326.42
450 x 300	44895.26	2068.91	2287.95	18.57	42.53	6686.10	447.23	680.63	7.17	42.34	80.63	2933.06
	54170.22	2462.28	2728.34	18.85	47.17	8104.49	540.30	822.24	7.29	49.34	133.56	3606.20
	64480.17	2891.49	3226.49	18.96	56.12	9647.68	638.92	974.73	7.33	57.34	214.10	4353.18
500 x 200	40078.31	1616.06	1836.46	20.24	43.97	1841.66	185.09	286.70	4.34	39.34	47.63	1068.00
	46078.61	1843.14	2098.16	20.39	49.44	2137.26	213.73	331.74	4.39	45.51	70.08	1249.37
	54781.17	2165.26	2465.37	20.69	55.23	2576.77	256.40	398.05	4.49	53.69	111.99	1524.71
	63752.81	2490.34	2839.63	20.95	61.21	3029.06	299.91	465.84	4.57	61.86	168.59	1814.09
500 x 300	57707.94	2394.52	2670.28	20.30	53.48	6755.16	450.34	688.88	6.95	48.03	89.68	3680.25
	68349.16	2801.20	3109.28	20.79	54.64	8105.22	540.35	823.97	7.16	55.20	138.45	4473.23
	81271.57	3290.35	3676.07	20.89	65.40	9648.92	639.00	977.19	7.20	64.37	222.88	5392.02
600 x 200	55572.26	1877.44	2143.07	23.91	49.36	1659.16	168.44	261.73	4.13	44.54	40.37	1388.31
	66179.52	2220.79	2559.28	23.77	61.96	1975.32	198.52	311.78	4.11	51.72	67.47	1662.61
	75236.92	2507.90	2892.32	23.94	68.91	2273.60	227.36	357.95	4.16	57.89	96.09	1926.04
	88154.00	2909.37	3351.44	24.28	76.36	2715.95	270.24	425.46	4.26	66.06	146.87	2323.82
600 x 300	98951.33	3400.39	3821.74	24.18	73.67	7659.04	510.60	786.02	6.73	61.23	139.32	6105.18
	114520.43	3895.25	4354.49	24.72	75.44	9009.29	600.62	921.26	6.93	68.40	201.47	7259.04
	133912.27	4508.83	5069.50	24.81	88.77	10572.98	700.20	1077.70	6.97	77.57	310.61	8606.16

# Universal Beams & Columns

According to ASTM A276/ A479 / A484



## Available sizes - ex. mill production or overseas stockists



### Laser fused

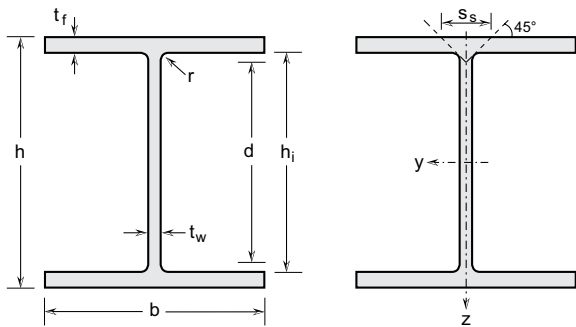
according to ASTM A1069, dimensional tolerances and grades, according to ASTM A276, ASTM A484, ASTM A479, ASME SA479, MTC EN 10204 3.1

### Stainless steel

Standard stainless steel grades 304/L and 316/L  
Annealed and pickled, lengths of 6000 -0/+100 mm

## General properties

Designation		Dimensions						Dimensions for detailing	
G	kg/m	h	b	t <sub>w</sub>	t <sub>f</sub>	r *	A	h <sub>i</sub>	d
		mm	mm	mm	mm	mm	mm <sup>2</sup> x10 <sup>2</sup>	mm	mm
700 x 300	165.6	692	300	13	20	16	206.96	652.0	620.0
	185.0	700	300	13	24	17	231.24	652.0	618.0
800 x 300	191.6	792	300	14	22	18	239.50	748.0	712.0
	211.1	800	300	14	26	19	263.82	748.0	710.0
900 x 300	214.1	890	299	15	23	20	267.57	844.0	804.0



## Structural properties

Designation	Strong axis y-y					Weak axis z-z				S <sub>s</sub>	I <sub>t</sub>	I <sub>w</sub>
	I <sub>y</sub>	W <sub>el,y</sub>	W <sub>pl,y</sub>	i <sub>y</sub>	A <sub>vz</sub>	I <sub>z</sub>	W <sub>el,z</sub>	W <sub>pl,z</sub>	i <sub>z</sub>			
	mm <sup>4</sup> x10 <sup>4</sup>	mm <sup>3</sup> x10 <sup>3</sup>	mm <sup>3</sup> x10 <sup>3</sup>	mm x10	mm <sup>2</sup> x10 <sup>2</sup>	mm <sup>4</sup> x10 <sup>4</sup>	mm <sup>3</sup> x10 <sup>3</sup>	mm <sup>3</sup> x10 <sup>3</sup>	mm x10	mm	mm <sup>4</sup> x10 <sup>4</sup>	mm <sup>6</sup> x10 <sup>9</sup>
700 x 300	167829.81	4850.57	5484.44	28.48	95.96	9014.17	600.94	929.76	6.60	71.75	223.90	10160.64
	197187.00	5633.91	6328.72	29.20	98.52	10814.57	720.97	1110.10	6.84	80.92	339.82	12338.35
800 x 300	248349.13	6271.44	7143.16	32.20	118.50	9920.48	661.37	1029.72	6.44	79.09	304.85	14674.28
	286797.44	7169.94	8110.05	32.97	121.34	11721.02	781.40	1210.14	6.67	88.26	442.71	17522.97
900 x 300	339675.06	7633.15	8776.98	35.63	142.68	10275.50	687.32	1079.70	6.20	84.43	371.15	19256.10

\* Profiles are laser fused with full penetration, equivalent to hot rolled (r = laser seam)