

Socket Weld Fittings

ASTM A182 3000LB / ASME B16.11 6000LB / BS 3799

Material: ASTM 316 / G316L

Socket Weld 45° Elbow

Grades: 316L
Style: Female/Female

Rating: 3000LB
Unit of Supply: Each



FPSE

| Product Code | Grade | Product Size (mm) | Description | Weight ea (kg) |
|----------------------|-------|-------------------|--------------------------------------|----------------|
| FPSE015NB45G316L3000 | G316L | 015NB (1/2") | SOCKET WELD ELBOW 45DEG 3000LB G316L | 0.18 |
| FPSE020NB45G316L3000 | G316L | 020NB (3/4") | SOCKET WELD ELBOW 45DEG 3000LB G316L | 0.30 |
| FPSE025NB45G316L3000 | G316L | 025NB (1") | SOCKET WELD ELBOW 45DEG 3000LB G316L | 0.45 |

Socket Weld 90° Elbow

Grades: 316L
Style: Female/Female

Rating: 3000LB
Unit of Supply: Each



FPSE

| Product Code | Grade | Product Size (mm) | Description | Weight ea (kg) |
|----------------------|-------|-------------------|--------------------------------------|----------------|
| FPSE008NB90G316L3000 | G316L | 008NB (1/4") | SOCKET WELD ELBOW 90DEG 3000LB G316L | 0.09 |
| FPSE010NB90G316L3000 | G316L | 010NB (3/8") | SOCKET WELD ELBOW 90DEG 3000LB G316L | 0.13 |
| FPSE015NB90G316L3000 | G316L | 015NB (1/2") | SOCKET WELD ELBOW 90DEG 3000LB G316L | 0.25 |
| FPSE020NB90G316L3000 | G316L | 020NB (3/4") | SOCKET WELD ELBOW 90DEG 3000LB G316L | 0.32 |
| FPSE025NB90G316L3000 | G316L | 025NB (1") | SOCKET WELD ELBOW 90DEG 3000LB G316L | 0.52 |
| FPSE032NB90G316L3000 | G316L | 032NB (1-1/4") | SOCKET WELD ELBOW 90DEG 3000LB G316L | 0.86 |
| FPSE040NB90G316L3000 | G316L | 040NB (1-1/2") | SOCKET WELD ELBOW 90DEG 3000LB G316L | 1.12 |
| FPSE050NB90G316L3000 | G316L | 050NB (2") | SOCKET WELD ELBOW 90DEG 3000LB G316L | 1.80 |

Socket Weld Tee

Grades: 316L
Style: Female/Female

Rating: 3000LB
Unit of Supply: Each



FPSTE

| Product Code | Grade | Product Size (mm) | Description | Weight ea (kg) |
|---------------------|-------|-------------------|------------------------------|----------------|
| FPSTE008NBG316L3000 | G316L | 008NB (1/4") | SOCKET WELD TEE 3000LB G316L | 0.11 |
| FPSTE010NBG316L3000 | G316L | 010NB (3/8") | SOCKET WELD TEE 3000LB G316L | 0.16 |
| FPSTE015NBG316L3000 | G316L | 015NB (1/2") | SOCKET WELD TEE 3000LB G316L | 0.34 |
| FPSTE020NBG316L3000 | G316L | 020NB (3/4") | SOCKET WELD TEE 3000LB G316L | 0.41 |
| FPSTE025NBG316L3000 | G316L | 025NB (1") | SOCKET WELD TEE 3000LB G316L | 0.65 |
| FPSTE032NBG316L3000 | G316L | 032NB (1-1/4") | SOCKET WELD TEE 3000LB G316L | 0.95 |
| FPSTE040NBG316L3000 | G316L | 040NB (1-1/2") | SOCKET WELD TEE 3000LB G316L | 1.33 |
| FPSTE050NBG316L3000 | G316L | 050NB (2") | SOCKET WELD TEE 3000LB G316L | 2.20 |

Socket Weld Fittings

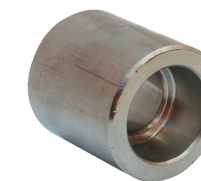
ASTM A182 3000LB / ASME B16.11 6000LB / BS 3799

Material: ASTM 316 / G316L

Socket Weld Full Coupling

Grades: 316L
Style: Female/Female

Rating: 3000LB
Unit of Supply: Each



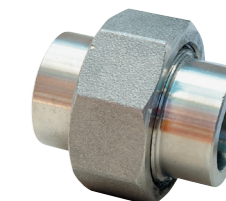
FPSCO

| Product Code | Grade | Product Size (mm) | Description | Weight ea (kg) |
|---------------------|-------|-------------------|-----------------------------------|----------------|
| FPSCO008NBG316L3000 | G316L | 008NB (1/4") | SOCKET WELD COUPLING 3000LB G316L | 0.05 |
| FPSCO010NBG316L3000 | G316L | 010NB (3/8") | SOCKET WELD COUPLING 3000LB G316L | 0.10 |
| FPSCO015NBG316L3000 | G316L | 015NB (1/2") | SOCKET WELD COUPLING 3000LB G316L | 0.14 |
| FPSCO020NBG316L3000 | G316L | 020NB (3/4") | SOCKET WELD COUPLING 3000LB G316L | 0.20 |
| FPSCO025NBG316L3000 | G316L | 025NB (1") | SOCKET WELD COUPLING 3000LB G316L | 0.30 |
| FPSCO032NBG316L3000 | G316L | 032NB (1-1/4") | SOCKET WELD COUPLING 3000LB G316L | 0.45 |
| FPSCO040NBG316L3000 | G316L | 040NB (1-1/2") | SOCKET WELD COUPLING 3000LB G316L | 0.60 |
| FPSCO050NBG316L3000 | G316L | 050NB (2") | SOCKET WELD COUPLING 3000LB G316L | 0.95 |

Socket Weld Union

Grades: 316L
Style: Female/Female

Rating: 3000LB
Unit of Supply: Each



FPSUN

| Product Code | Grade | Product Size (mm) | Description | Weight ea (kg) |
|---------------------|-------|-------------------|--------------------------------|----------------|
| FPSUN015NBG316L3000 | G316L | 015NB (1/2") | SOCKET WELD UNION 3000LB G316L | 0.40 |
| FPSUN020NBG316L3000 | G316L | 020NB (3/4") | SOCKET WELD UNION 3000LB G316L | 0.45 |
| FPSUN025NBG316L3000 | G316L | 025NB (1") | SOCKET WELD UNION 3000LB G316L | 0.75 |
| FPSUN032NBG316L3000 | G316L | 032NB (1-1/4") | SOCKET WELD UNION 3000LB G316L | 1.30 |
| FPSUN040NBG316L3000 | G316L | 040NB (1-1/2") | SOCKET WELD UNION 3000LB G316L | 1.70 |
| FPSUN050NBG316L3000 | G316L | 050NB (2") | SOCKET WELD UNION 3000LB G316L | 3.00 |