

08 /

Sign Panels

Sign Panels	63
UltraSign	64
Security Mesh	65

4mm Sign Panels

UA 1642

Square Hollow
Kg/m: 0.313
P: 102
OAD: 25.4 x 25.4

UA 7948

4mm Sign Panel Cap
Kg/m: 0.167
P: 89
OAD: 26.5 x 8

UA 7949

4mm Sign Panel Joints
Kg/m: 0.305
P: 160
OAD: 51.5 x 8

UA 7950

4mm Sign Panel Int
Corner
Kg/m: 0.334
P: 172
OAD: 33 x 33

UA 7951

4mm Sign Panel Ext
Corner
Kg/m: 0.366
P: 184
OAD: 32.56 x 32.56

UA 7990

4mm Sign Panel Frame
Kg/m: 0.481
P: 125
OAD: 32 x 20.5

UA 7991

4mm Sign Panel Box
Frame
Kg/m: 1.269
P: 443
OAD: 67.4 x 67.4

UA 1508

Cast Box Corner Fits
UA 7991
Code: FCA1508
Made to order, minimum
order quantity required
for purchase

UA 7948



UA 7949



UA 7951



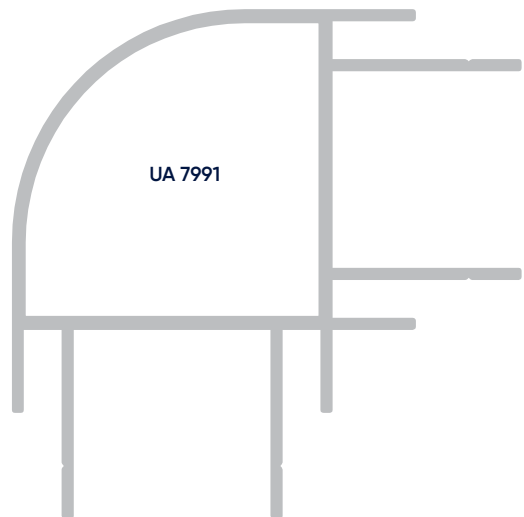
UA 7950



UA 7990



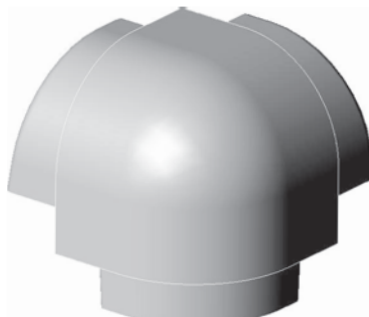
UA 7991



UA 1642



UA 1508



OAD = Overall Dimension
ID = Internal Dimensions
P = Ext Periphery

**Blue = Mill run only.
Non stocked item.**

Minimum order 250kg.

**Contact your local
branch to enquire.**

*Diagrams are schematic
only and not intended as
specification drawings.*

UltraSign

A popular product consisting of an insulated core sandwiched between two aluminium facings.

UltraSign is often used extensively for external walls, internal structures, signages and roof construction on commercial buildings. Specialist uses include cold storage, warehousing, food, hotels and other environments which need to adhere to stringent hygiene standards.



Composition

- Three layer composite structure.
- Aluminium sheet (standard thickness 0.30mm) covers both sides.
- The panel is surface coated with PE (Polyester) paint. The centre core is low density polyethylene.

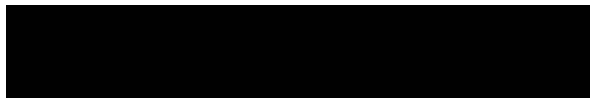
Features

UltraSign Composite Sign Panel is well known for its main characteristics such as:

- Pre-painted, light weight panel
- Excellent surface flatness and paintable smooth surface
- High quality colour consistency
- Surface enables precise printing
- High strength and flexible
- Easy to fabricate
- Easy to maintain

Colours

Side A



Black (Gloss/Matt)



Red (Gloss)



Dark Blue (Gloss)

Product Applications*

- Signage and displays
- Advertisement boards
- Creative interior decoration
- Recommended for use as a Signage Panel

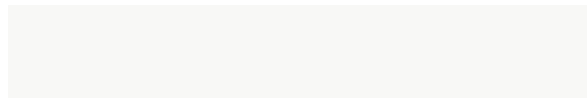
Colours

- Standard colour range as per chart
- Various colour combinations and finishes available on each side.**
- Surface coated with PE (Polyester) paint

Panel Sizes

- 2440 x 1220 x 4mm
- 3000 x 1500 x 4mm
- 3600 x 1500 x 4mm
- 4800 x 1500 x 4mm

Side B



White (Gloss/Matt)



Yellow (Gloss)



Aluminium (Natural)

* Sign Panel is Not Fire Resistant and is Not Approved for use as an Exterior Building or Construction Cladding.

** Check on range and availability of stocked items

Technical Data

Sign Panel Thickness	4mm
Panel weight (kg/m ²)	4.8mm
Aluminium Sheet Thickness	0.30mm
Panel Thickness Tolerance	+/- 0.2mm
Panel Width Tolerance	+/- 2mm
Panel Length Tolerance	+/- 3mm
Panel Diagonal Tolerance	+/- 5mm
Aluminium Sheet Thickness Tolerance	+/- 0.02mm
Paint Thickness	20 +/- 2 µm
Paint Pencil Hardness	>HB
Paint Toughness	3T
Impact Strength	50 (kg/cm)
Temperature Resistance	-50°C to 90 °C (Subject to thermal expansion & shrinkage)
Fire Resistance	NOT Fire resistant – Material is combustible & flammable
Peel Strength (180°C)	>5 Newton/mm
Boiling Water Resistance	2 Hours without change
Storage	Avoid areas affected by rain, dampness or condensation
Solvent Resistance	100x with Dimethylbenzene without change
Cleaning Resistance	Over 100x without change

UltraSign ACP for Sign/Display Polyester Coating Warranty

This warranty pertains to the polyester coating system with one coat polyester quality on the surface of the aluminium composite sign panel.

In regards to weather resistance the polyester coating has a consistent colour aging of white over 10 years and approximately 5 years for all other colours. This is dependent upon the panels being used in standard project locations and under normal conditions.

Normal conditions exclude the following:

Corrosive or aggressive environments e.g wind born sand, chemicals or chemical fumes, contamination by salt spray, submersion in water and airborne fumes or liquids.

Damage to the product caused by cut edges exposed to the environment.

Damage such as scratching caused in storage, handling, processing, during or after installation.

Panels must be cleaned frequently.

It is recommended that the panels be cleaned with a fluff free cloth using warm water (20–30°C) mixed with a neutral detergent. After cleaning, panels should be washed down with cold water.

DO NOT USE any powerful alkaline cleaning agents such as potassium hydroxide, sodium carbonate or caustic soda, or any powerful acidic products or scouring agents.

DO NOT STORE in rain, wet areas or areas with high condensation.

Security Mesh

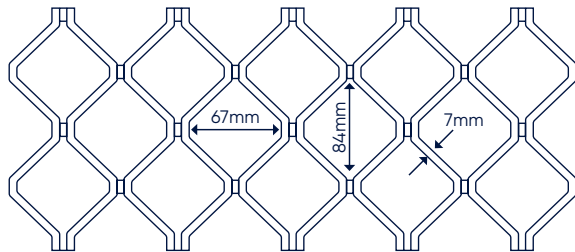
We offer an extensive range of UltraSafe security window and door screens, combining stainless steel woven mesh, high-grade aluminum framing, and top tier hardware.

Tested for Harsh Conditions

Our security products are designed and tested to withstand the harsh conditions, including cyclonic debris requirements. This ensures that you can secure your home effectively while maintaining the luxury of openness. UltraSafe's unique design allows assembly without the need for screws, rivets, or pins, eliminating any possible cause for corrosion.

Superior Quality and Durability

All UltraSafe security window and door screens are manufactured using high-grade, innovatively designed aluminum framing extruded from 6063 T6 premium grade alloy and woven wire mesh made from 316 grade stainless steel. This combination ensures exceptional corrosion resistance, strength, and durability.



"007" Security Mesh AS2803

Panel Sizes

- 2000 x 750 x 7mm
- 4000 x 750 x 7mm
- 2000 x 920 x 7mm
- 4000 x 920 x 7mm
- 2000 x 1250 x 7mm
- 4000 x 1250 x 7mm

Available In

- Mill finish
- Silver Anodised
- Bronze Anodised
- White Powder Coated